



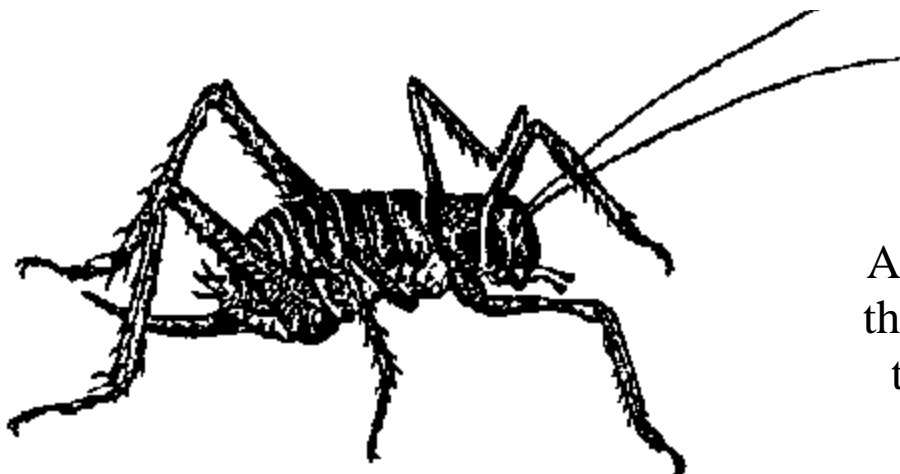
Email operations@ngamanu.co.nz www.ngamanu.co.nz
Ngarara Rd, Waikanae Ph/Fax 04 2934131

BARK

Bark is a feature of trees and some shrubs. It's a protective covering of cork, which helps to prevent the tree being damaged.

The trunks of trees vary considerably in colour and texture. Different kinds of trees have different trunk patterns formed by bark growth and the way it splits and cracks as the tree grows.

Bark can differ greatly from tree to tree and can sometimes be used to distinguish between different trees.

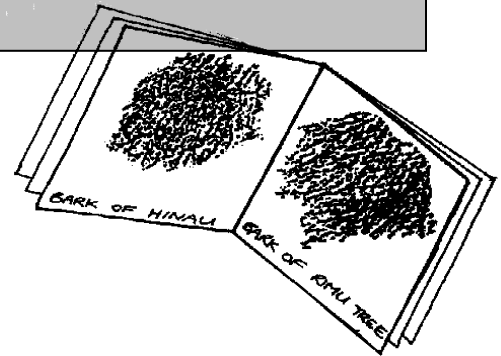
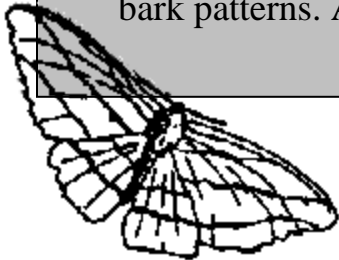


A weta is an animal that often makes the trunks of trees its home.

Take a piece of paper and a crayon and place the paper on the bark of tree. Rub the crayon over the paper, you will have an impression of the bark pattern on your paper. Do this with a number of different trees, compare the patterns.

Which is the roughest?
Which is the smoothest?

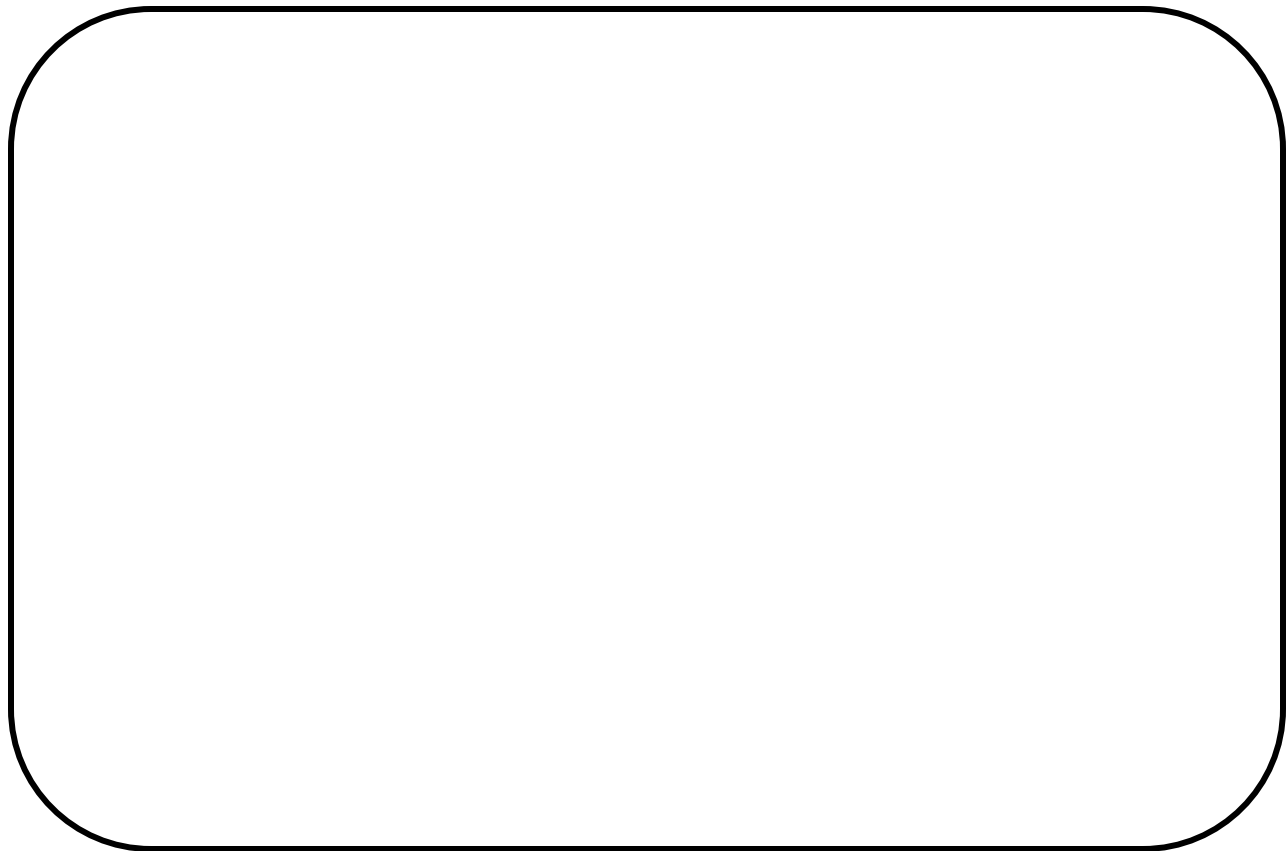
Put the name of the tree next to the bark rubbing from that tree, (most of the trees are labelled). Staple all your rubbings into this sheet to make booklet of bark patterns. An example of what each page might look like is shown.



With their many cracks, crevices, crannies and splits, tree trunks provide homes for a wide variety of small animals.



Start with a tree trunk that is rough. Look for any signs that animals live on or in the bark. Examples of signs might be cobwebs, holes and actual animals. Draw a few examples of the things you found on your trunk in the box below.



Name: _____